

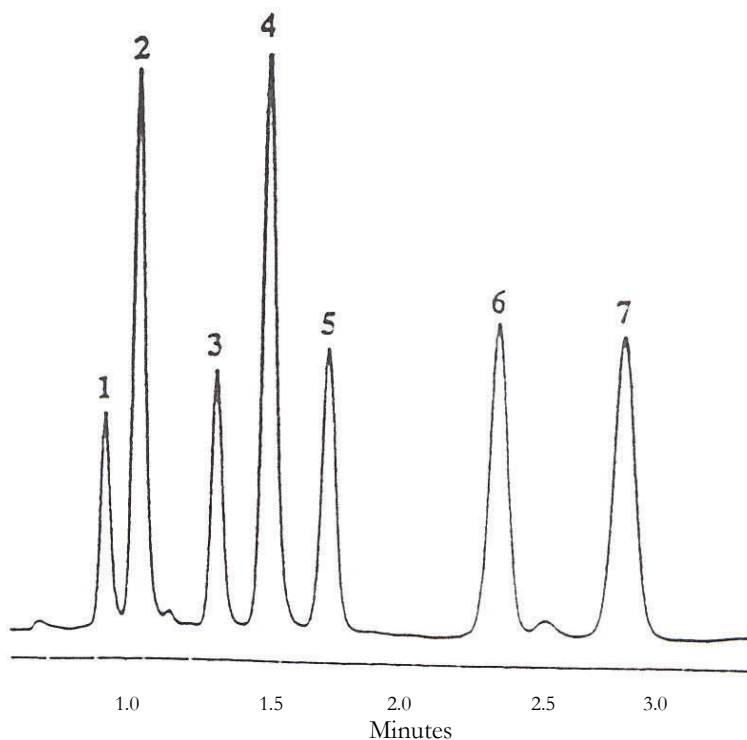
LC/MS/MS Analysis of N-Methyl Carbamates

Application News

701 South Route 73 • West Berlin, New Jersey 08091-2621 • (856) 753-8400 • Fax (856) 753-8484

Epic C18 MS is specifically engineered for the demands of LC-MS. It provides superior retention even at high organic levels. Many LC-MS applications rely on high level of organic modifier in the mobile phase, particularly in the for high performance trace analysis requiring high sensitivity and low level detection; Epic C18-MS is ideally suited for these mobile phase conditions.

Epic C18-MS is product of high bonding density technology; high bonding density provides the maximum stationary phase interaction providing a platform for flexible mobile phase compositions. In addition, it is compatible with all LC-MS mobile phases and buffer system. A chromatogram of N-methyl carbamates (shown below) displays the unique capabilities of this stationary phase for a difficult separation. This column provides advanced high performance/high resolution LC-MS separations in a narrow bore short column formats.



Aldicarb Sulfone
Methomyl
3-Hydroxycarbofuran
Dioxacarb
Aldicarb
Propoxur
Carbofuran

HPLC Conditions:

Column: Epic C18-MS, 5um 50 X 2.1mm ID
Solvent A: 0.1% Formic Acid: 2mM NH₄Ac
Solvent B: Acetonitrile

| | Time | %B |
|---|------|----|
| 0 | 20 | |
| 2 | 40 | |
| 3 | | 60 |

Flow: 0.2mL/min

MS Conditions: Upon Request



LC/MS/MS Analysis of N-Methyl Carbamates

Application News

701 South Route 73 • West Berlin, New Jersey 08091-2621 • (856) 753-8400 • Fax (856) 753-8484

Epic C18 MS Ordering Information

| Description | Particle Size - μ | Pore Size - A | Length mm | Standard-bore (4.6 mm ID) | Standard-bore (4.0 mm ID) | Small-bore (3.2 mm ID) | Small-bore (2.1 mm ID) | List Price USD |
|-------------|-----------------------|---------------|-----------|---------------------------|---------------------------|------------------------|------------------------|----------------|
| Epic C18 SD | 3 | 120 | 50 | 115191-EC18-SD | 114191-EC18-SD | 11d191-EC18-SD | 112191-EC18-SD | \$415.00 |
| Epic C18 SD | 3 | 120 | 100 | 125191-EC18-SD | 124191-EC18-SD | 12d191-EC18-SD | 122191-EC18-SD | \$455.00 |
| Epic C18 SD | 3 | 120 | 150 | 135191-EC18-SD | 134191-EC18-SD | 13d191-EC18-SD | 132191-EC18-SD | \$495.00 |
| Epic C18 SD | 5 | 120 | 50 | 115291-EC18-SD | 114291-EC18-SD | 11d291-EC18-SD | 112291-EC18-SD | \$390.00 |
| Epic C18 SD | 5 | 120 | 100 | 125291-EC18-SD | 124291-EC18-SD | 12d291-EC18-SD | 122291-EC18-SD | \$415.00 |
| Epic C18 SD | 5 | 120 | 150 | 135291-EC18-SD | 134291-EC18-SD | 13d291-EC18-SD | 132291-EC18-SD | \$455.00 |
| Epic C18 SD | 5 | 120 | 250 | 155291-EC18-SD | 154291-EC18-SD | 15d291-EC18-SD | 152291-EC18-SD | \$495.00 |
| Epic C18 SD | 5 | 120 | 300 | 165291-EC18-SD | 164291-EC18-SD | 16d291-EC18-SD | 162291-EC18-SD | \$545.00 |