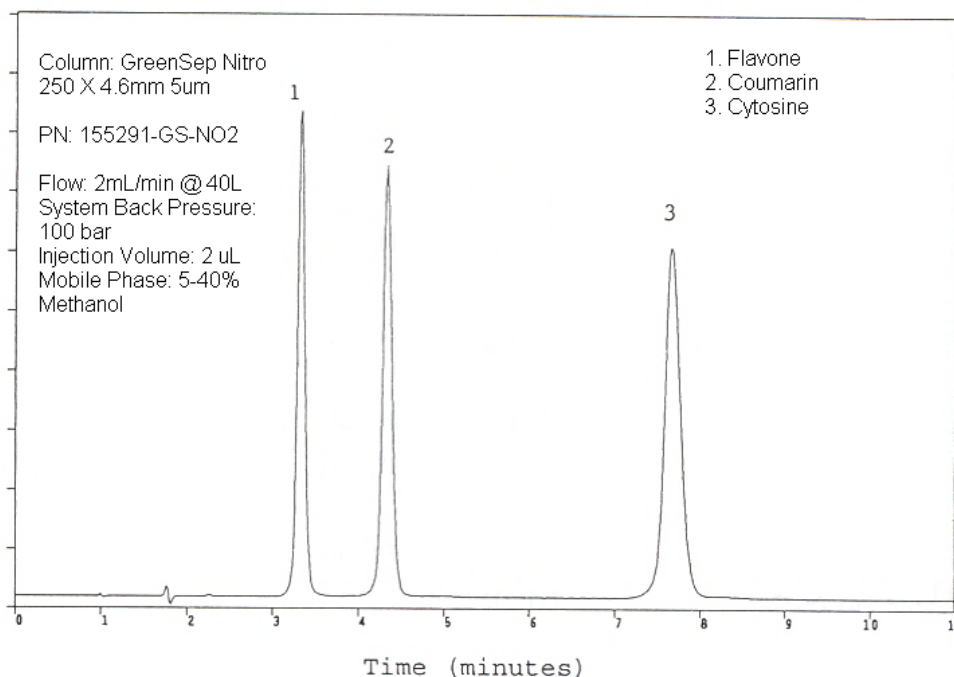


 <b>INDUSTRIES</b>	GreenSep™ Nitro SFC Columns
	<b>Application News</b> 701 South Route 73 • West Berlin, New Jersey 08091-2621 • (856) 753-8400 • Fax (856) 753-8484

GreenSep™ Nitro - Supercritical fluid chromatography (SFC) is a powerful chromatographic technique for the separation of complex mixtures. It has been useful in several aspects of chromatography including preparative and rapid analysis. Many SFC separations have been forced to utilize older types of stationary phases from “normal phase” HPLC such as unmodified silica, diol, amino and cyano. These phases are poorly adapted to SFC and present a number of limitations for SFC separations. Limitations include: low capacity, poor selectivity, and poor peak shape for SFC separations.

At ES Industries we have developed a new line stationary phases, GreenSep SFC specifically engineered for SFC separations, one of these phases is GreenSep Nitro SFC. GreenSep Nitro SFC stationary phase has proven superior to conventional stationary phases (such as diol, cyano etc...) in the areas of separation selectivity and loading capacity. The chromatogram shown below is a prime example of the separation selectivity obtainable with the GreenSep Nitro SFC column. GreenSep Nitro SFC is specifically designed for the separation of geometrical isomers as well as diastereomers. It is the column of choice in separating compounds that contain an aromatic group, polarizable electrons, halogenated groups and conjugate systems. GreenSep Nitro SFC is unsurpassed for its separation capabilities and is available in analytical columns, preparative columns and bulk media.



GreenSep™ Nitro 5u 120A				
	<u>4.6mm (ID)</u>	<u>4.0mm (ID)</u>	<u>3.2mm (ID)</u>	<u>2.1mm (ID)</u>
5cm	115291-GS-NO2	114291-GS-NO2	11d291-GS-NO2	112291-GS-NO2
10cm	125291-GS-NO2	124291-GS-NO2	12d291-GS-NO2	122291-GS-NO2
15cm	135291-GS-NO2	134291-GS-NO2	13d291-GS-NO2	132291-GS-NO2
25cm	155291-GS-NO2	154291-GS-NO2	15d291-GS-NO2	152291-GS-NO2

GreenSep™ Nitro 10u 120A				
	<u>4.6mm (ID)</u>	<u>4.0mm (ID)</u>	<u>3.2mm (ID)</u>	<u>2.1mm (ID)</u>
10cm	125391-GS-NO2	124391-GS-NO2	12d391-GS-NO2	122391-GS-NO2
15cm	135391-GS-NO2	134391-GS-NO2	13d391-GS-NO2	132391-GS-NO2
25cm	155391-GS-NO2	154391-GS-NO2	15d391-GS-NO2	152391-GS-NO2
30cm	165391-GS-NO2	164391-GS-NO2	16d391-GS-NO2	162391-GS-NO2

ES INDUSTRIES  
701 South Route 73  
West Berlin NJ 08091

Toll-Free: 1-800-356-6140  
Telephone: 856-753-8400  
Fax: 856-753-8484

email: [esindustries@msn.com](mailto:esindustries@msn.com) website: [www.esind.com](http://www.esind.com)