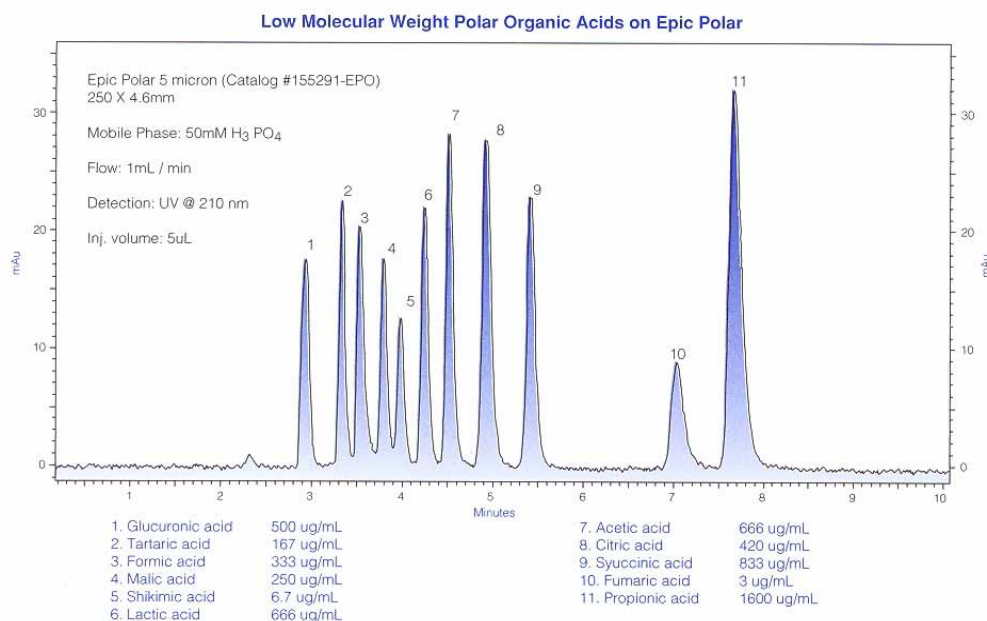


**Epic Polar** – Epic Polar is a high density C18 packing specifically engineered for the retention of polar analytes. The retention characteristics of Epic Polar can be seen in separation of 11 highly polar organic acids shown in the figure below. This phase provides for superior hydrophobic performance even with 100% aqueous mobile phases.

Epic Polar  
 Pore Size: 120A  
 Surface Area: 230m<sup>2</sup>/g  
 Carbon %: 18  
 pH range: 1 – 12



ES INDUSTRIES  
 701 South Route 73  
 West Berlin NJ 08091

Toll-Free: 1-800-356-6140  
 Telephone: 856-753-8400  
 Fax: 856-753-8484