



INDUSTRIES

StarRise™ C18 HPLC Columns

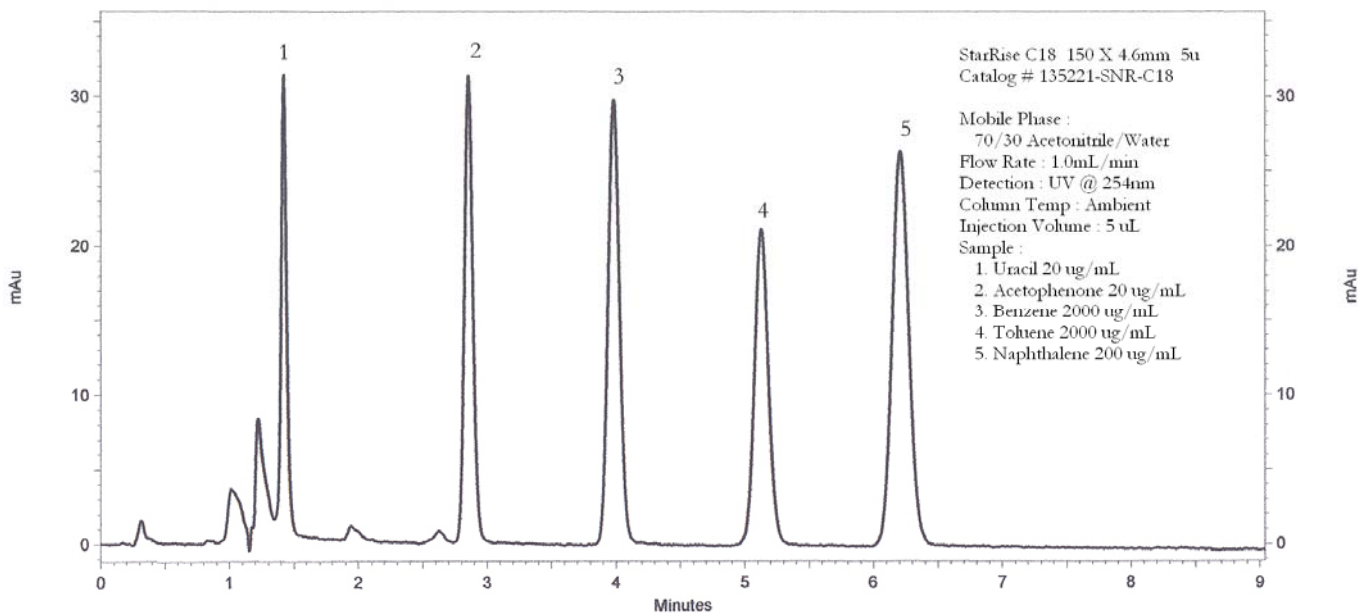
Application News

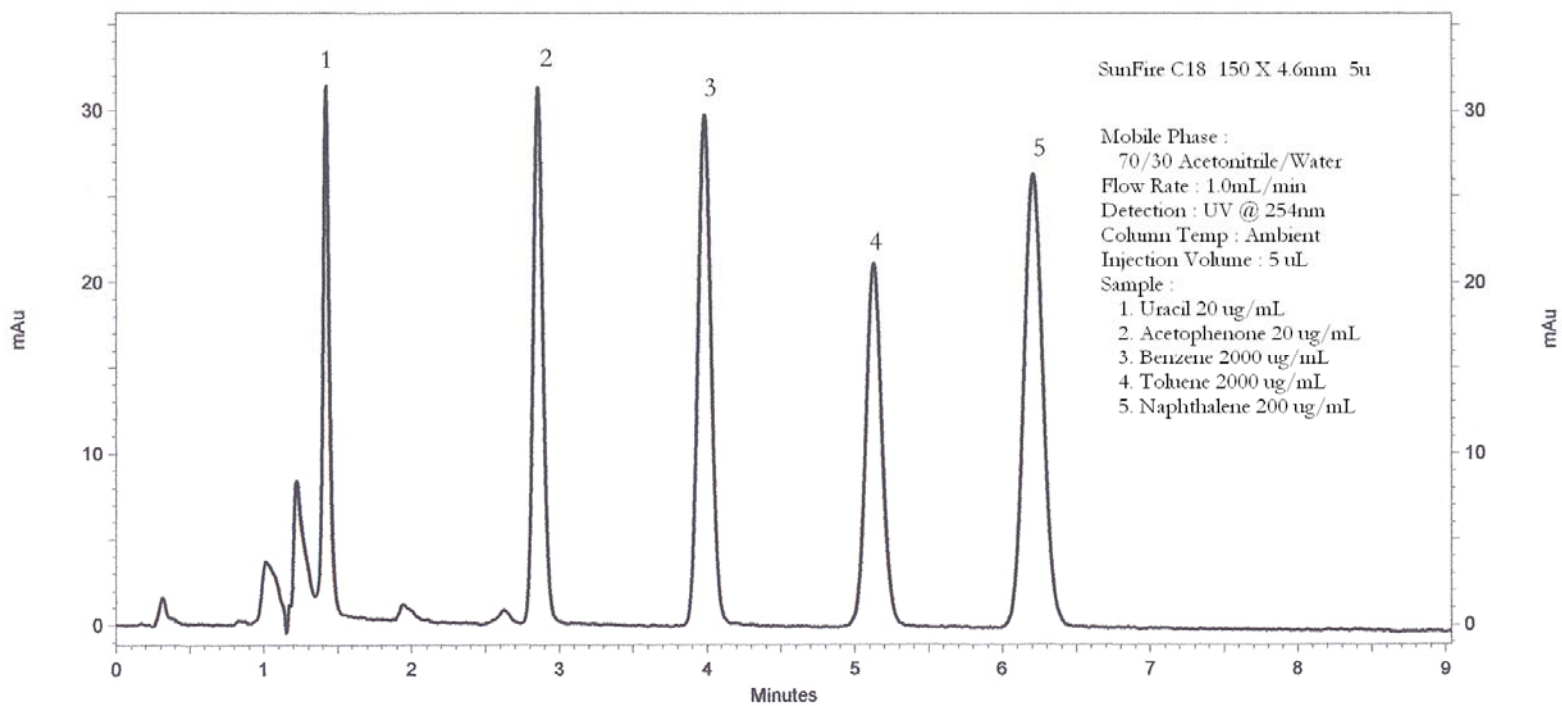
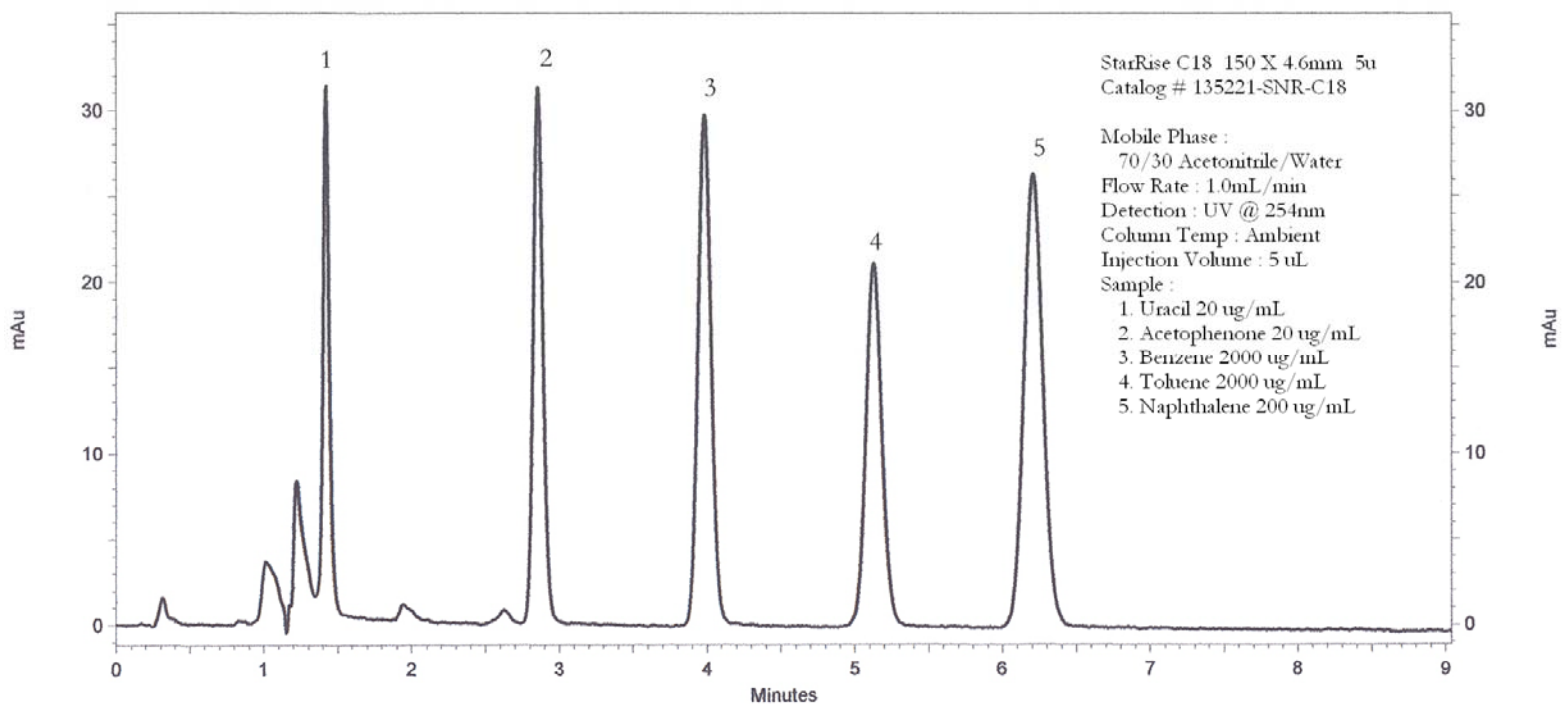
701 South Route 73 • West Berlin, New Jersey 08091-2621 • (856) 753-8400 • Fax (856) 753-8484

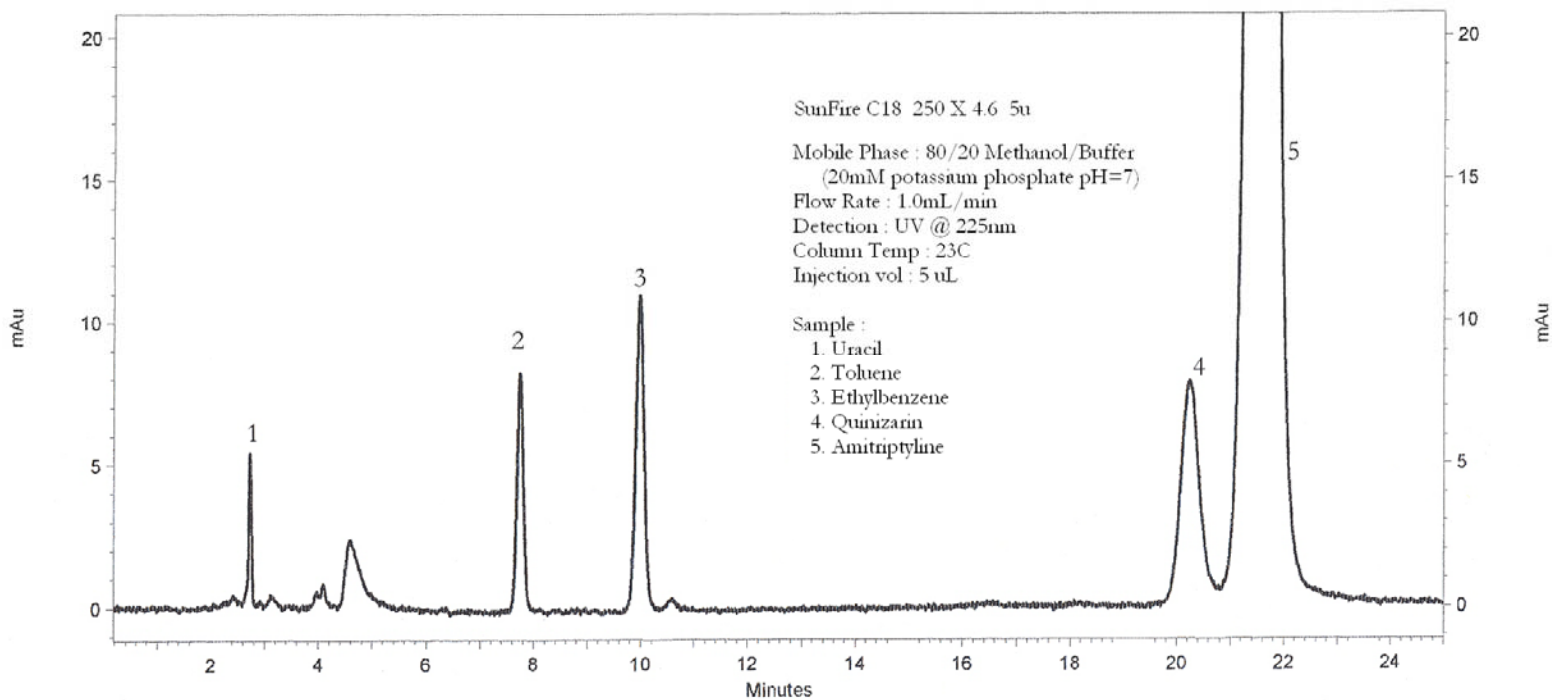
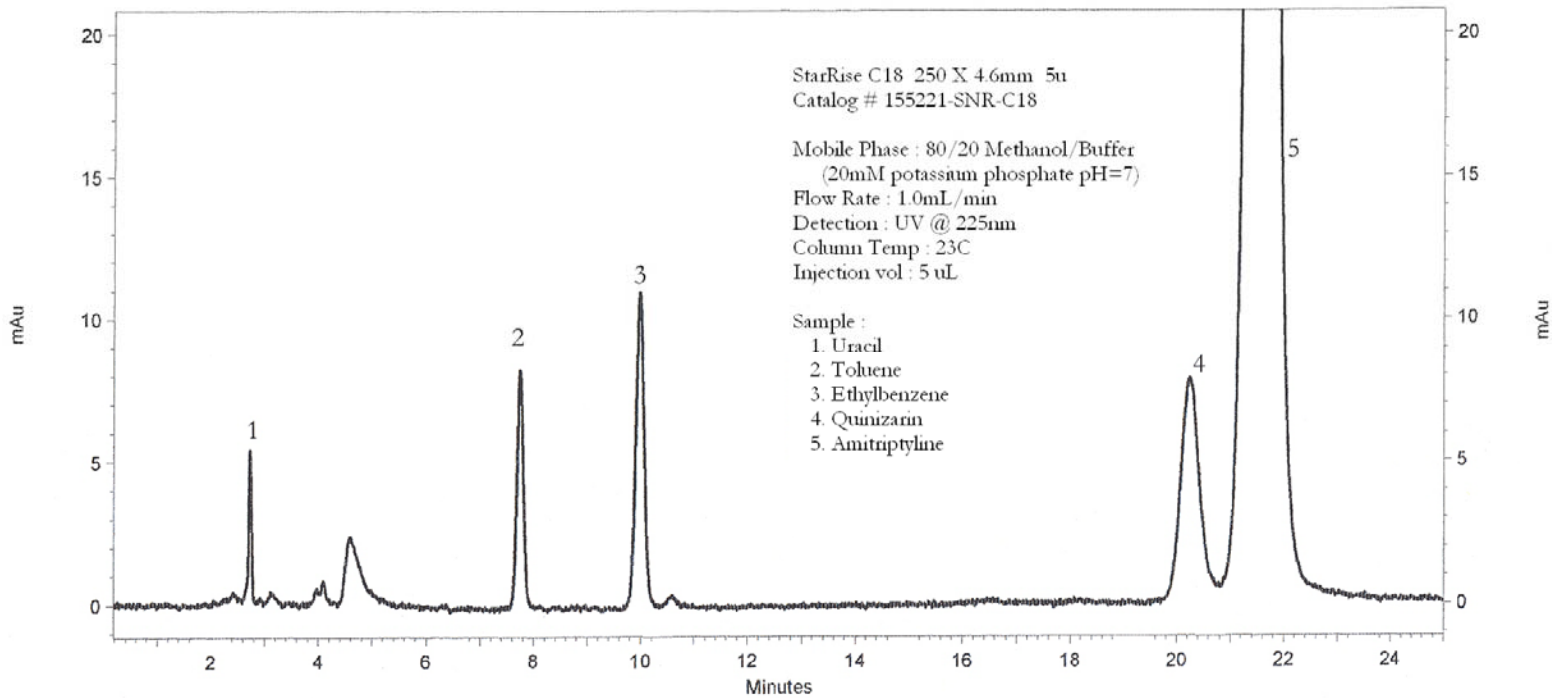
StarRise™ - *The StarRise™ line is an identical selectivity to the Waters SunFire™ C18 and C8 materials.* StarRise™ has a long column lifetime and excellent reproducibility. StarRise™ columns provide symmetrical peaks for improved resolution and quantization of acidic neutral and basic compounds a low and intermediate pH range. StarRise™ is available in many particle sizes as well as preparative bulk.

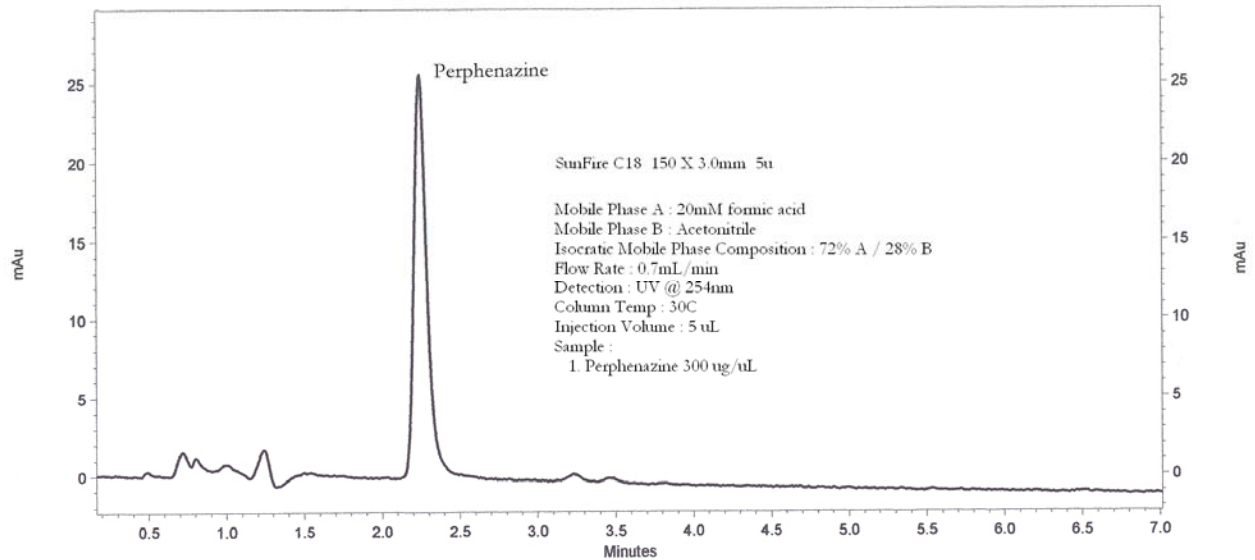
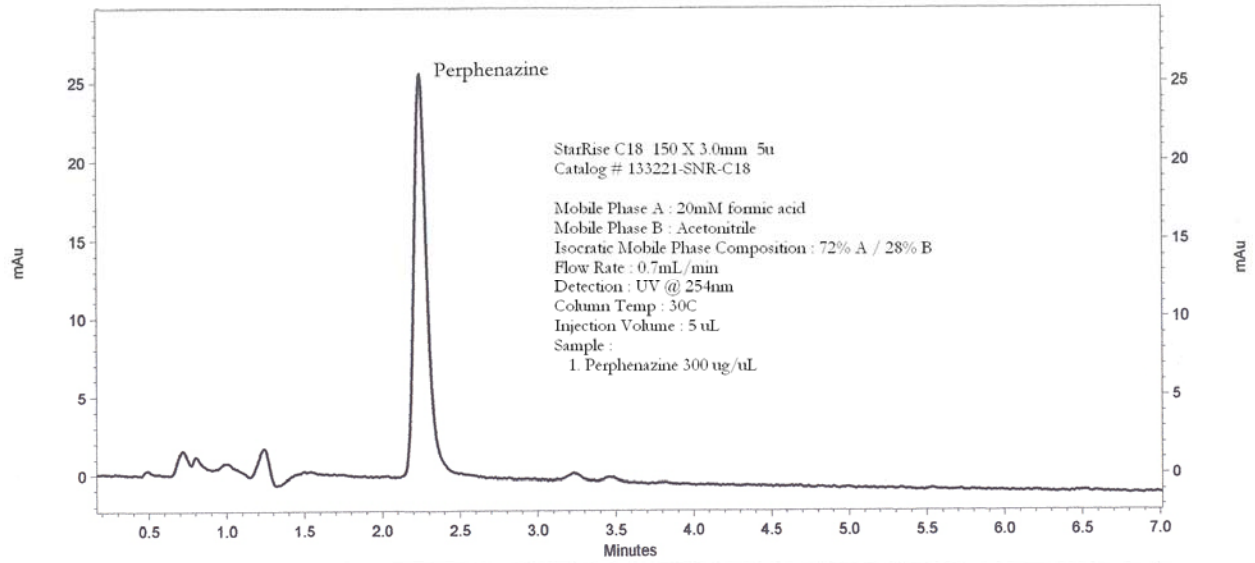
Specifications

- Spherical Silica
- Particle Size Available : 2.5 μ , 3.5 μ , 5 μ
- Pore Diameter : 100Å
- Carbon Loading : C8 = 11.5%
- Carbon Loading : C18 = 16%
- Endcapped









StarRise™ C18 2.5u 100A				
	4.6mm (ID)	4.0mm (ID)	3.2mm (ID)	2.1mm (ID)
5cm	115H21-SNR-C18	114H21-SNR-C18	11dH21-SNR-C18	112H21-SNR-C18
10cm	125H21-SNR-C18	124H21-SNR-C18	12dH21-SNR-C18	122H21-SNR-C18
15cm	135H21-SNR-C18	134H21-SNR-C18	13dH21-SNR-C18	132H21-SNR-C18
StarRise™ C18 3.5u 100A				
	4.6mm (ID)	4.0mm (ID)	3.2mm (ID)	2.1mm (ID)
5cm	115121-SNR-C18	114121-SNR-C18	11d121-SNR-C18	112121-SNR-C18
10cm	125121-SNR-C18	124121-SNR-C18	12d121-SNR-C18	122121-SNR-C18
15cm	135121-SNR-C18	134121-SNR-C18	13d121-SNR-C18	132121-SNR-C18
StarRise™ C18 5u 100A				
	4.6mm (ID)	4.0mm (ID)	3.2mm (ID)	2.1mm (ID)
5cm	115221-SNR-C18	114221-SNR-C18	11d221-SNR-C18	112221-SNR-C18
10cm	125221-SNR-C18	124221-SNR-C18	12d221-SNR-C18	122221-SNR-C18
15cm	135221-SNR-C18	134221-SNR-C18	13d221-SNR-C18	132221-SNR-C18
25cm	155221-SNR-C18	154221-SNR-C18	15d221-SNR-C18	152221-SNR-C18

ES INDUSTRIES
701 South Route 73
West Berlin NJ 08091

Toll-Free: 1-800-356-6140
Telephone: 856-753-8400
Fax: 856-753-8484

email: esindustries@msn.com
website: www.esind.com