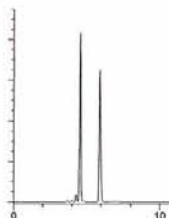
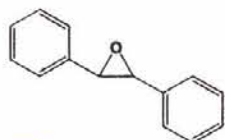


When comparing apples to apples, RegisCell™ makes cents

RegisCell™ The Affordable Alternative



TSO

Column: RegisCell 5 μ m
25 cm x 4.6 mm

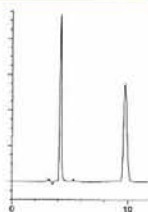
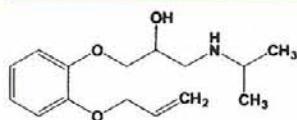
Mobile Phase: (85/15) Hexane/IPA

Flow Rate: 1.0 mL/min

Detection: UV 254 nm

K'_1 : 0.52

α : 1.82



Oxprenolol

Column: RegisCell 5 μ m
25 cm x 4.6 mm

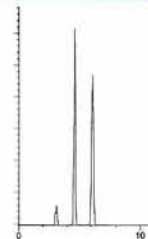
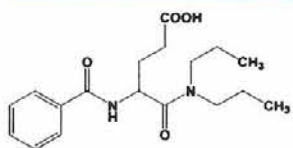
Mobile Phase: (70/30) Hexane/IPA
+0.1% DEA

Flow Rate: 1.0 mL/min

Detection: UV 254 nm

K'_1 : 0.41

α : 5.48



Proglumide

Column: RegisCell 5 μ m
25 cm x 4.6 mm

Mobile Phase: (90/10) Hexane/IPA
+0.1% TFA

Flow Rate: 1.0 mL/min

Detection: UV 245 nm

K'_1 : 0.55

α : 1.88

Chiral Chromatographers **now have a choice**. RegisCell™—the new and improved polysaccharide coated chiral column from Regis Technologies, Inc.—is the affordable, smarter solution.

▶ Excellent Selectivity

RegisCell™ columns are made using a unique production process of coating the proven chiral selector—tris-(3,5-dimethylphenyl) carbamoyl cellulose on high purity silica gel.

▶ Superior Separations

Data show excellent theoretical plate count and resolution in the separation of a wide range of compounds.

▶ Fast Method Development and Run Times

The columns' high pressure limit (450 bars) delivers faster method development and run times without sacrificing resolution or performance.

▶ Fast Equilibrium Times

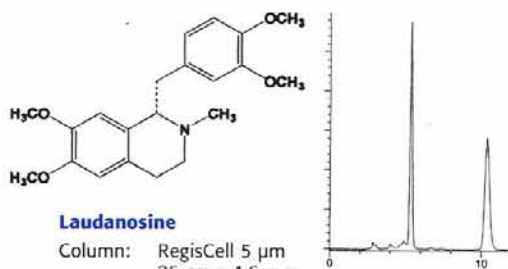
Leverage the columns' high pressure limit for equilibration times when switching from one compatible mobile phase to another.

▶ Same Price for SFC and HPLC Columns

RegisCell™ columns are packed and tested at high pressures for use in both SFC and HPLC mode.

▶ Free Chiral Screening

Regis Technologies offers free chiral screening on its proprietary phases. Regis is your first and only stop in determining which stationary phase meets your compound's needs.



Laudanosine

Column: RegisCell 5 μ m
25 cm x 4.6 mm

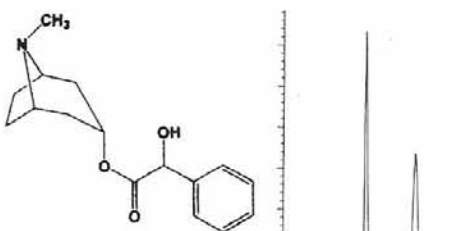
Mobile Phase: (80/20)
Hexane/Ethanol

Flow Rate: 1.0 mL/min

Detection: UV 220 nm

K'_1 : 0.79

α : 3.10



Homatropine

Column: RegisCell 5 μ m
25 cm x 4.6 mm

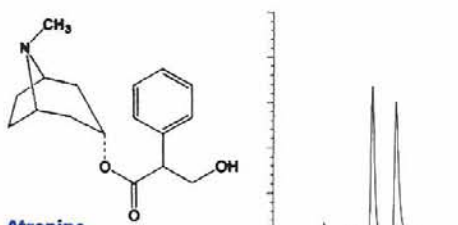
Mobile Phase: (85/15)
Hexane/Ethanol

Flow Rate: 1.0 mL/min

Detection: UV 220 nm

K'_1 : 0.74

α : 2.42



Atropine

Column: RegisCell 5 μ m
25 cm x 4.6 mm

Mobile Phase: (90/10)
Hexane/Ethanol

Flow Rate: 1.0 mL/min

Detection: UV 220 nm

K'_1 : 0.93

α : 1.48

RegisCell™ CSP Columns & Bulk Material

Particle Size	Column Size	Part #	Price
5 μ m	25 cm x 4.6 mm i.d.	784104	\$ 1,400.00
5 μ m	25 cm x 10.0 mm i.d.	784105	\$ 4,400.00
5 μ m	25 cm x 21.1 mm i.d.	784106	\$ 11,000.00
5 μ m	25 cm x 30.0 mm i.d.	784107	\$ 17,000.00
5 μ m	25 cm x 50.0 mm i.d.	784108	\$ 42,500.00
10 μ m	25 cm x 4.6 mm i.d.	784204	\$ 1,400.00
10 μ m	25 cm x 10.0 mm i.d.	784205	\$ 4,400.00
10 μ m	25 cm x 21.1 mm i.d.	784206	\$ 11,000.00
10 μ m	25 cm x 30.0 mm i.d.	784207	\$ 17,000.00
10 μ m	25 cm x 50.0 mm i.d.	784208	\$ 42,500.00

RegisCell™ CSP Columns are available in 5, 10, and 20 micron particle sizes enabling easily scale up from analytical to preparation using HPLC or SFC conditions. Bulk material and 20 micron columns are available upon request.

Other Chiral Stationary Phases from Regis Technologies

Regis Technologies is proud to be a leader in chiral separations, serving the analytical and preparative needs of chromatographers worldwide.

We manufacture columns and bulk material including:

Whelk-O™	α -Burke 2	Leucine	ChiroSil®
ULMO	β -Gem	Chiral AGP	RCA(+) SCA(-)
Pirkle I-J	Phenylglycine	Chiral HSA	DACH-DNB
		Chiral CBH	

For more information:
Phone: 847-583-7662
Email: sales@registech.com
Web: www.RegisTech.com



About Regis Technologies, Inc.

Regis Technologies, Inc. is a privately held company that provides synthesis and separations services to the pharmaceutical, biotechnology and other related industries. Regis provides innovative chromatography products and services, especially those with a chiral emphasis, through the utilization of our extensive organic expertise and collegiate collaborations. For more information, please visit <http://www.RegisTech.com/>.

8210 Austin Avenue, Morton Grove, IL 60053-0519