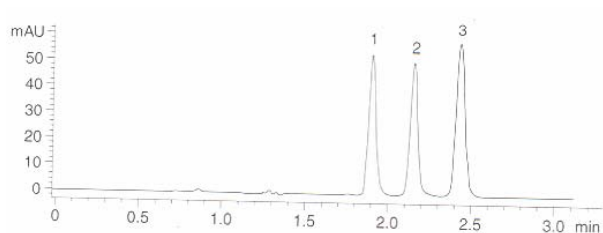


Epic HILIC-RP is useful for retention and separation of polar and non-polar compounds. Reversed phase HPLC is widely used for separation of many pharmaceutical compounds. Retention and separation of many polar analytes has proven to be a challenge. Many of these types of compounds are unretained or poorly retained on most conventional reversed phase stationary phases, such as ODS. Fortunately, to deal with these types of analytes an alternative mode of chromatography can be utilized using polar stationary phases and highly organic mobile phases. This mode of chromatography has been utilized for many years and is referred to as “hydrophilic interaction chromatography” or HILIC. HILIC chromatography uses mobile phases containing between 5 – 20 % water for the retention of polar compounds.

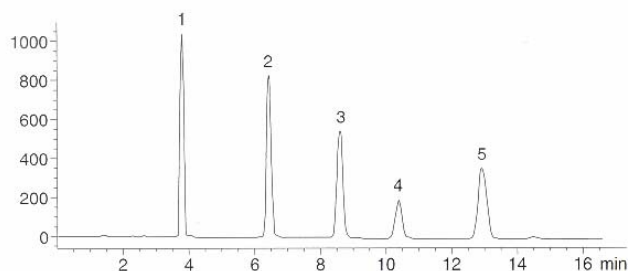
Epic HILIC-RP is a new stationary phase for a combination of HILIC and reversed phase chromatography. It is a combination of a polyhydroxylated polymer coated and bound to silica and ODS groups also bound to silica. This composition provides hydroxyl levels that are well above conventional hydroxyl and diol type stationary phases. Many of the commercial stationary phases used for HILIC chromatography are converted normal phase columns. These normal phase columns yield poor methods, poor separations and lack durability. Epic HILIC-RP is specifically designed for HILIC chromatography and can achieve high performance separations, yield rugged methods and deliver long column life times. Epic HILIC-RP is an excellent choice for samples containing polar and hydrophobic analytes.

Benzodiazepines



Column: Epic HILIC-RP 250 X 4.6mm 5 micron
 Mobile Phase: Methanol/Water (90:10)
 Detection: UV @ 235nm
 Flow: 1.0mL/min
 Sample: 1. Lormetazepam
 2. Diazepam
 3. Oxazepam

Steroids



Column: Epic HILIC-RP 250 X 4.6mm 5 micron
 Mobile Phase: 30% Water / 70% Methanol
 Detection: UV @ 254nm
 Flow: 1.0mL/min
 Sample: 1. Hydrocortisone
 2. Corticosterone
 3. 11 α - Hydroxyprogesterone
 4. Cortisone Acetate
 5. 11 - Ketoprogesterone

Epic HILIC-RP 3u 100A

	<u>4.6mm (ID)</u>	<u>4.0mm (ID)</u>	<u>3.2mm (ID)</u>	<u>2.1mm (ID)</u>
5cm	115191-EHRP	114191-EHRP	11d191-EHRP	112191-EHRP
10cm	125191-EHRP	124191-EHRP	12d191-EHRP	122191-EHRP
15cm	135191-EHRP	134191-EHRP	13d191-EHRP	132191-EHRP

Epic HILIC-RP 5u 100A

	<u>4.6mm (ID)</u>	<u>4.0mm (ID)</u>	<u>3.2mm (ID)</u>	<u>2.1mm (ID)</u>
5cm	115291-EHRP	114291-EHRP	11d291-EHRP	112291-EHRP
10cm	125291-EHRP	124291-EHRP	12d291-EHRP	122291-EHRP
15cm	135291-EHRP	134291-EHRP	13d291-EHRP	132291-EHRP
25cm	155291-EHRP	154291-EHRP	15d291-EHRP	152291-EHRP

ES INDUSTRIES
 701 South Route 73
 West Berlin NJ 08091

Toll-Free: 1-800-356-6140
 Telephone: 856-753-8400
 Fax: 856-753-8484

email: esindustries@msn.com website: www.esind.com