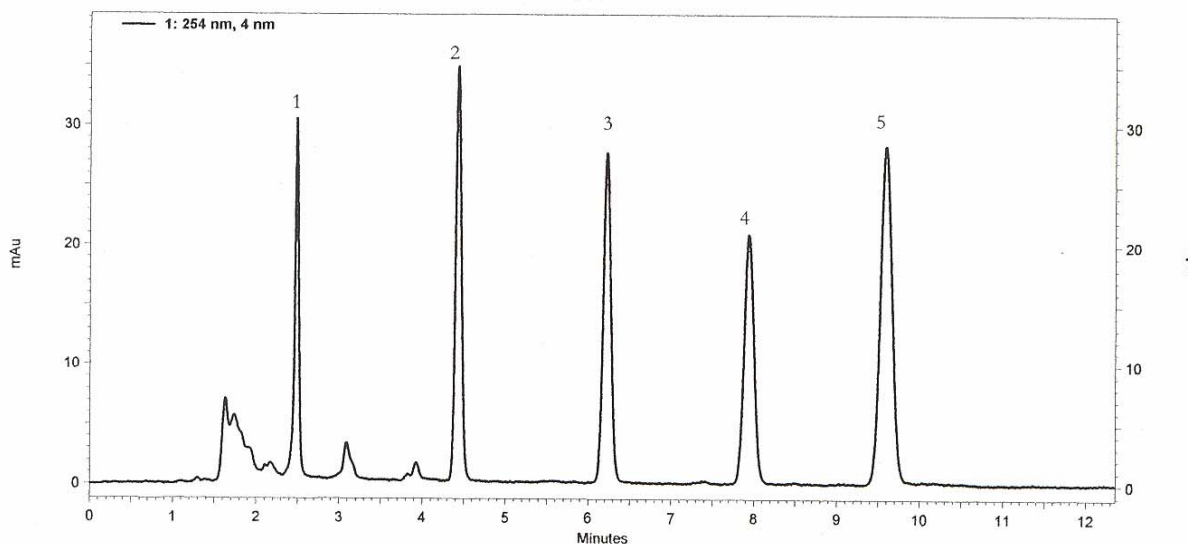


	Sonoma™ C18(2) HPLC Columns
	<h1>Application News</h1> <p>701 South Route 73 • West Berlin, New Jersey 08091-2621 • (856) 753-8400 • Fax (856) 753-8484</p>

Sonoma™ – *The Sonoma™ line is an equivalent to Phenomenex Luna™.* The most popular is the C18(2); ES Industries offers this exact type HPLC column in 3μ and 5μ sizes with bulk and preparative material available. Excellent efficiencies, peak shape and resolution are obtained for virtually all Luna™ HPLC applications. Range of particle sizes offers amazing versatility for capillary and LC/MS to prep and process scale applications.

Specifications: Surface area: 400m²/g; Carbon 17.5%; pH 1.5 to 10

Sonoma™ C18(2) 250 X 4.6mm 5u

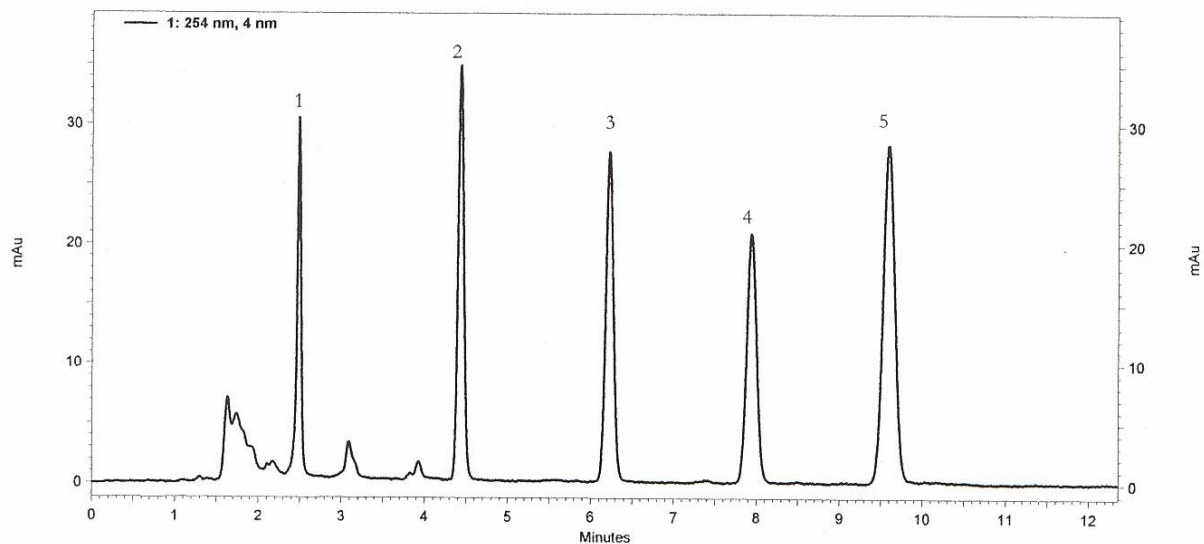


Sonoma™ C18(2) 250 X 4.6mm 5u

Mobile Phase	:	70/30 Acetonitrile/Water
Flow Rate	:	1.0mL/min
Detection	:	UV @ 254nm
Column Temp	:	Ambient
Injection volume	:	5uL
Sample	:	1. Uracil 20 ug/mL
		2. Acetophenone 20 ug/mL
		3. Benzene 2000 ug/mL
		4. Toluene 2000 ug/mL
		5. Naphthalene 200 ug/mL

* Luna™ is a registered trademark of Phenomenex, Inc.

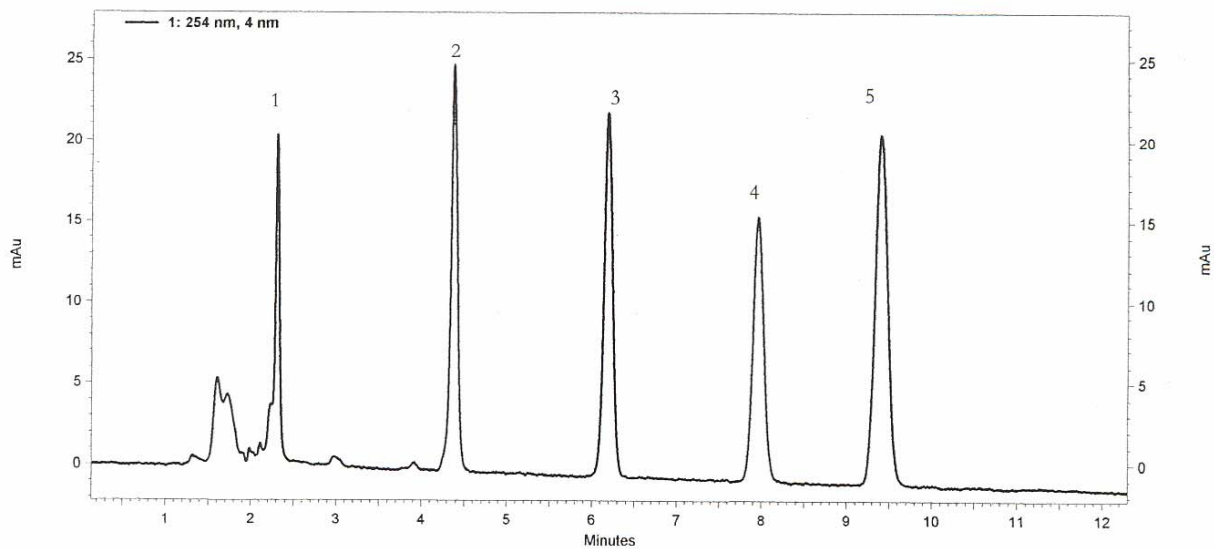
Sonoma™ C18(2) 250 X 4.6mm 5u



Sonoma™ C18(2) 250 X 4.6mm 5u

Mobile Phase	:	70/30 Acetonitrile/Water
Flow Rate	:	1.0mL/min
Detection	:	UV @ 254nm
Column Temp	:	Ambient
Injection volume	:	5uL
Sample	:	1. Uracil 20 ug/mL 2. Acetophenone 20 ug/mL 3. Benzene 2000 ug/mL 4. Toluene 2000 ug/mL 5. Naphthalene 200 ug/mL

Luna™ C18(2) 250 X 4.6mm 5u

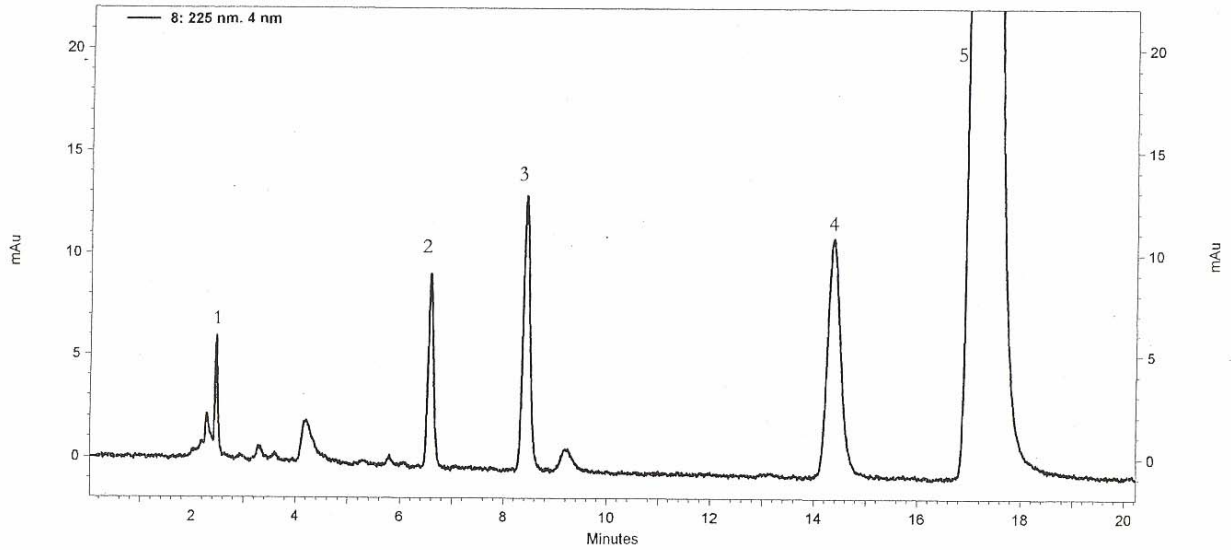


Luna™ C18(2) 250 X 4.6mm 5u

Mobile Phase	:	70/30 Acetonitrile/Water
Flow Rate	:	1.0mL/min
Detection	:	UV @ 254nm
Column Temp	:	Ambient
Injection volume	:	5uL
Sample	:	1. Uracil 20 ug/mL 2. Acetophenone 20 ug/mL 3. Benzene 2000 ug/mL 4. Toluene 2000 ug/mL 5. Naphthalene 200 ug/mL

* Luna™ is a registered trademark of Phenomenex, Inc.

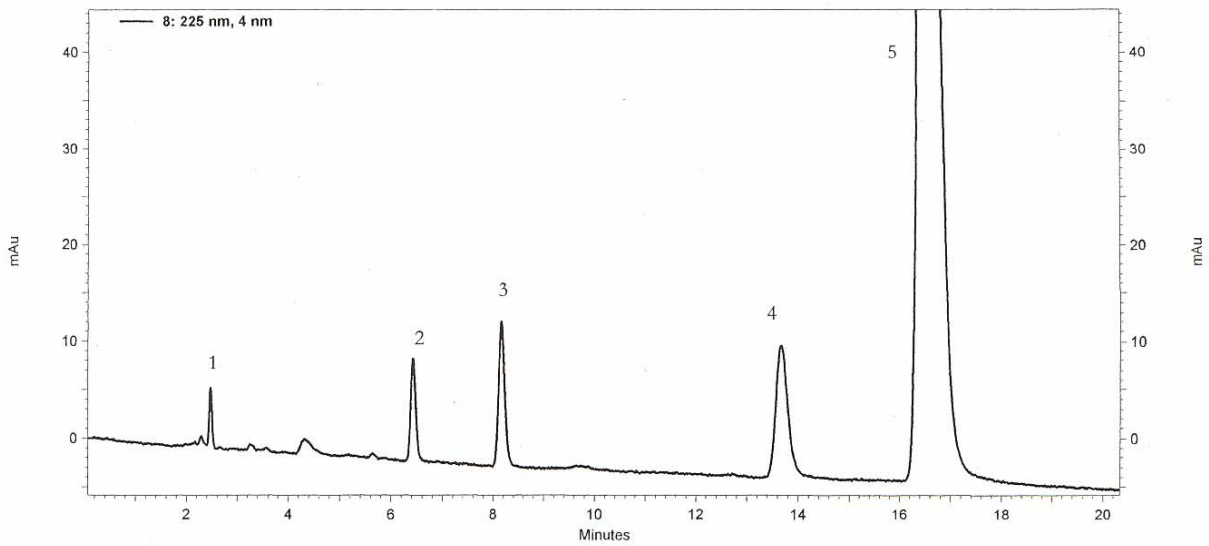
Sonoma™ C18(2) 250 X 4.6mm 5u



Sonoma™ C18(2) 250 X 4.6mm 5u

Mobile Phase : 80/20 Acetonitrile/Water (20mM potassium phosphate pH=7)
 Flow Rate : 1.0mL/min
 Detection : UV @ 254nm
 Column Temp : 23°C
 Injection volume : 5 uL
 Sample :
 1. Uracil
 2. Toluene
 3. Ethyl Benzene
 4. Quinizarin
 5. Amitriptyline

Luna™ C18(2) 250 X 4.6mm 5u



Luna™ C18(2) 250 X 4.6mm 5u

Mobile Phase : 80/20 Acetonitrile/Water (20mM potassium phosphate pH=7)
 Flow Rate : 1.0mL/min
 Detection : UV @ 254nm
 Column Temp : 23°C
 Injection volume : 5 uL
 Sample :
 1. Uracil
 2. Toluene
 3. Ethyl Benzene
 4. Quinizarin
 5. Amitriptyline

* Luna™ is a registered trademark of Phenomenex, Inc.

Sonoma™ C18(2) 3u 100A

	<u>4.6mm (ID)</u>	<u>4.0mm (ID)</u>	<u>3.2mm (ID)</u>	<u>2.1mm (ID)</u>
5cm	115121-SMA-C18(2)	114121-SMA-C18(2)	11d121-SMA-C18(2)	112121-SMA-C18(2)
10cm	125121-SMA-C18(2)	124121-SMA-C18(2)	12d121-SMA-C18(2)	122121-SMA-C18(2)
15cm	135121-SMA-C18(2)	134121-SMA-C18(2)	13d121-SMA-C18(2)	132121-SMA-C18(2)

Sonoma™ C18(2) 5u 100A

	<u>4.6mm (ID)</u>	<u>4.0mm (ID)</u>	<u>3.2mm (ID)</u>	<u>2.1mm (ID)</u>
5cm	115221-SMA-C18(2)	114221-SMA-C18(2)	11d221-SMA-C18(2)	112221-SMA-C18(2)
10cm	125221-SMA-C18(2)	124221-SMA-C18(2)	12d221-SMA-C18(2)	122221-SMA-C18(2)
15cm	135221-SMA-C18(2)	134221-SMA-C18(2)	13d221-SMA-C18(2)	132221-SMA-C18(2)
25cm	155221-SMA-C18(2)	154221-SMA-C18(2)	15d221-SMA-C18(2)	152221-SMA-C18(2)

Sonoma™ C18(2) 10u 100A

	<u>4.6mm (ID)</u>	<u>4.0mm (ID)</u>	<u>3.2mm (ID)</u>	<u>2.1mm (ID)</u>
5cm	115321-SMA-C18(2)	114321-SMA-C18(2)	11d321-SMA-C18(2)	112321-SMA-C18(2)
10cm	125321-SMA-C18(2)	124321-SMA-C18(2)	12d321-SMA-C18(2)	122321-SMA-C18(2)
15cm	135321-SMA-C18(2)	134321-SMA-C18(2)	13d321-SMA-C18(2)	132321-SMA-C18(2)
25cm	155321-SMA-C18(2)	154321-SMA-C18(2)	15d321-SMA-C18(2)	152321-SMA-C18(2)
30cm	165321-SMA-C18(2)	164321-SMA-C18(2)	16d321-SMA-C18(2)	162321-SMA-C18(2)

Sonoma™ C18(2) 15u 100A

	<u>4.6mm (ID)</u>	<u>4.0mm (ID)</u>	<u>3.2mm (ID)</u>	<u>2.1mm (ID)</u>
5cm	115B21-SMA-C18(2)	114B21-SMA-C18(2)	11dB21-SMA-C18(2)	112B21-SMA-C18(2)
10cm	125B21-SMA-C18(2)	124B21-SMA-C18(2)	12dB21-SMA-C18(2)	122B21-SMA-C18(2)
15cm	135B21-SMA-C18(2)	134B21-SMA-C18(2)	13dB21-SMA-C18(2)	132B21-SMA-C18(2)
25cm	155B21-SMA-C18(2)	154B21-SMA-C18(2)	15dB21-SMA-C18(2)	152B21-SMA-C18(2)
30cm	165B21-SMA-C18(2)	164B21-SMA-C18(2)	16dB21-SMA-C18(2)	162B21-SMA-C18(2)

ES INDUSTRIES
701 South Route 73
West Berlin NJ 08091

Toll-Free: 1-800-356-6140
Telephone: 856-753-8400
Fax: 856-753-8484

email: esindustries@msn.com
website: www.esind.com