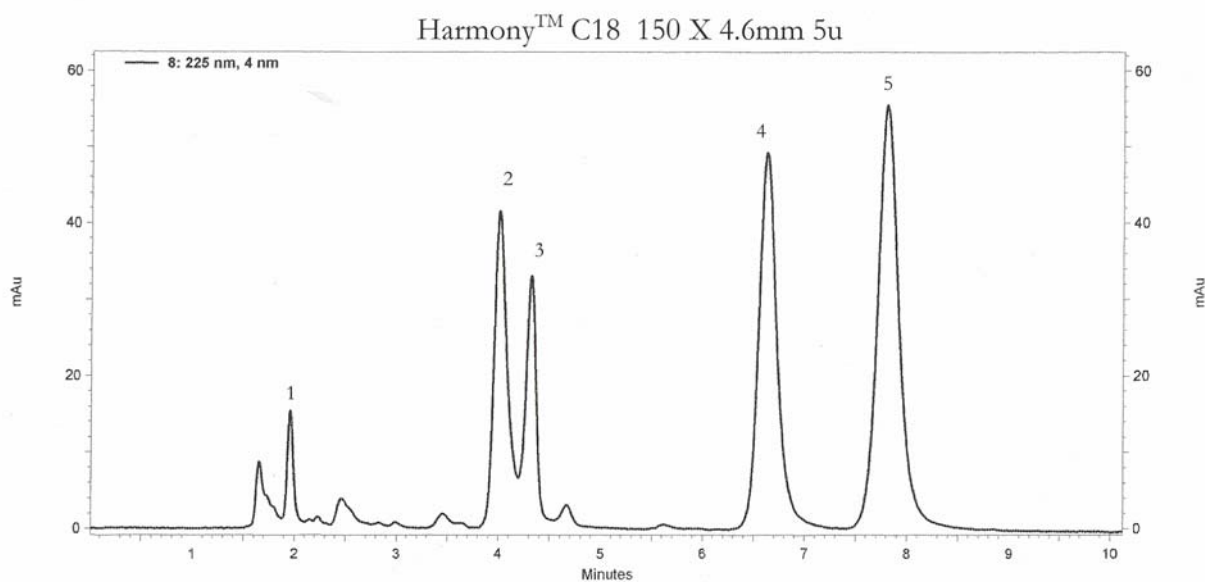


 <b>INDUSTRIES</b>	Harmony™ C18 HPLC Columns
	<h1>Application News</h1> <p>701 South Route 73 • West Berlin, New Jersey 08091-2621 • (856) 753-8400 • Fax (856) 753-8484</p>

**Harmony™** – *Harmony™ is an identical selectivity to the Waters Symmetry® HPLC column.* Many chromatographers use Harmony™ when looking for a Symmetry® equivalent. Harmony™ will offer long column lifetime and excellent reproducibility. Harmony™ is engineered to the tightest specifications and is available in large scale bulk.

Specifications: Spherical 100Å; 19% Carbon (C18); endcapped

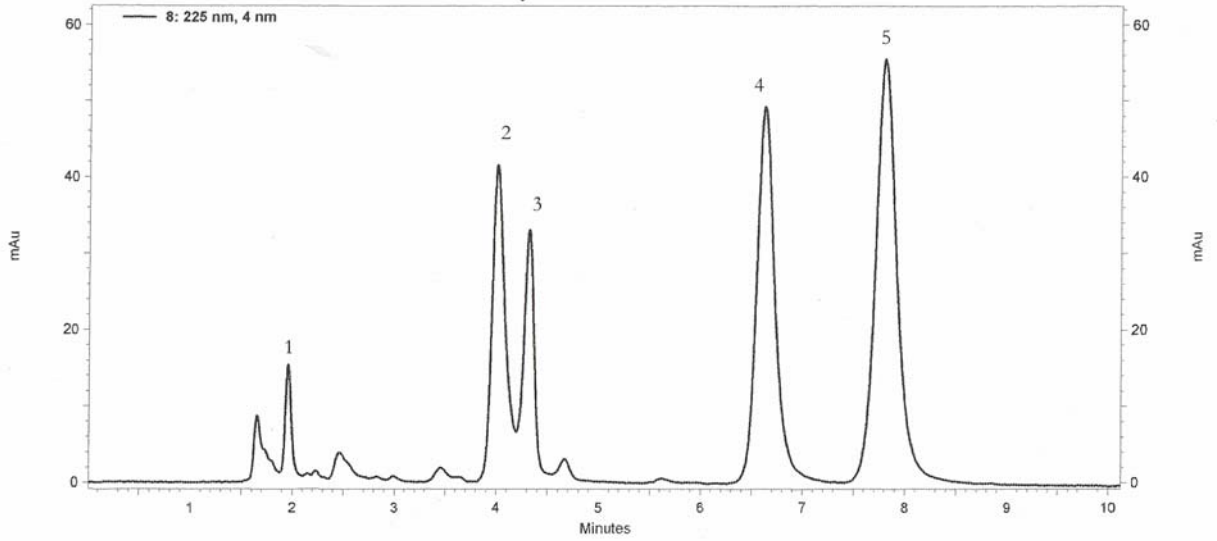


Harmony™ C18 150 X 4.6mm 5u

Mobile Phase	:	80/20 Methanol/Buffer (20mM potassium phosphate pH=7)
Flow Rate	:	1.0mL/min
Detection	:	UV @ 225nm
Column Temp	:	23°C
Injection Volume	:	5 uL
Sample	:	1. Norephedrine 2. Nortriptyline 3. Toluene 4. Imipramine 5. Amitriptyline

\* Symmetry® is a registered trademark of Waters Corporation.

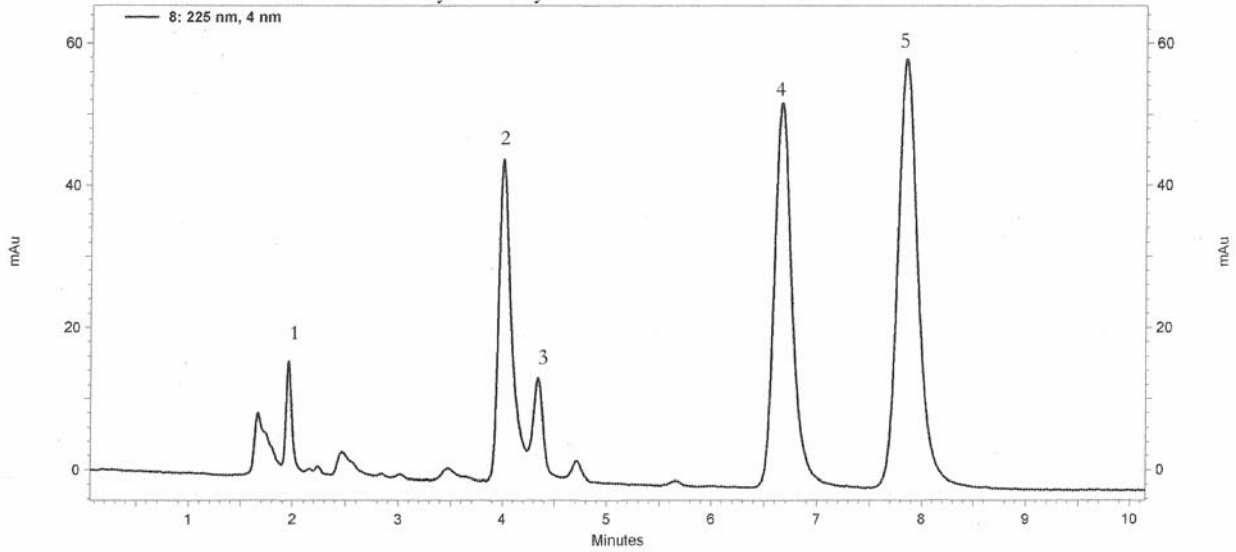
Harmony™ C18 150 X 4.6mm 5u



Harmony™ C18 150 X 4.6mm 5u

Mobile Phase : 80/20 Methanol/Buffer (20mM potassium phosphate pH=7)  
 Flow Rate : 1.0mL/min  
 Detection : UV @ 225nm  
 Column Temp : 23°C  
 Injection Volume : 5 uL  
 Sample :  
 1. Norephedrine  
 2. Nortriptyline  
 3. Toluene  
 4. Imipramine  
 5. Amitriptyline

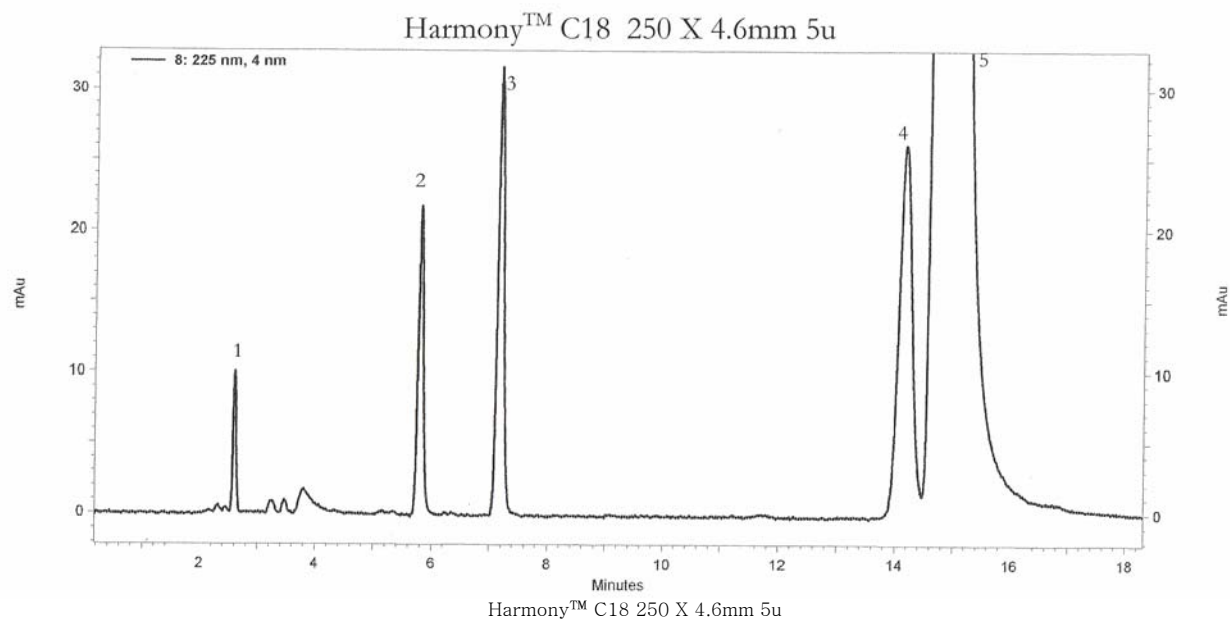
Symmetry™ C18 150 X 4.6mm 5u



Symmetry™ C18 150 X 4.6mm 5u

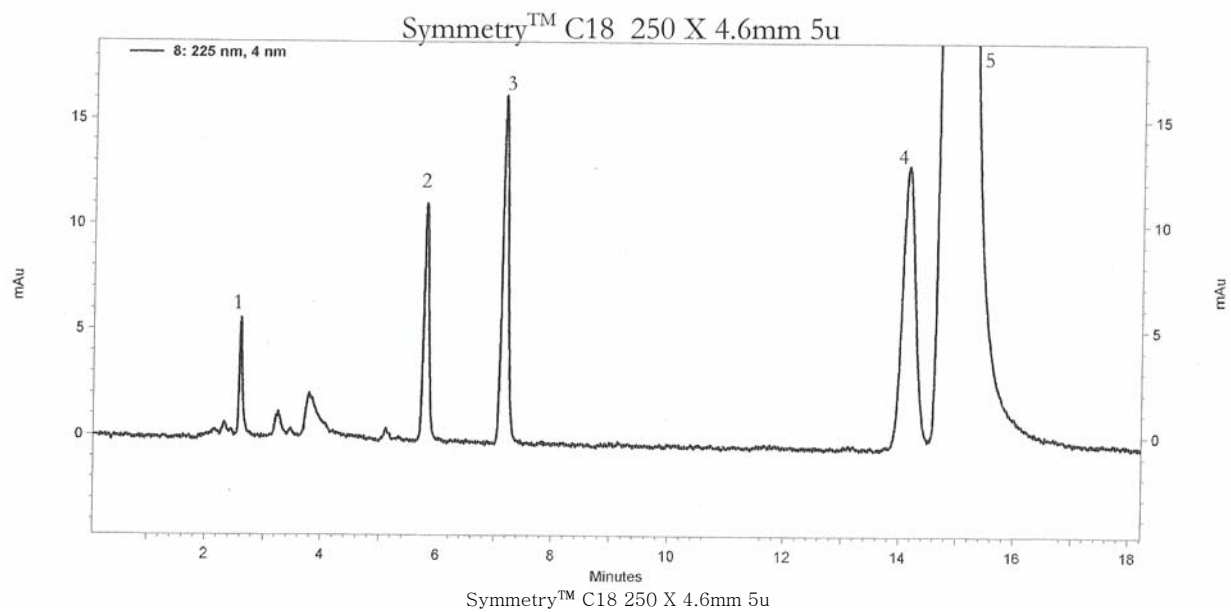
Mobile Phase : 80/20 Methanol/Buffer (20mM potassium phosphate pH=7)  
 Flow Rate : 1.0mL/min  
 Detection : UV @ 225nm  
 Column Temp : 23°C  
 Injection Volume : 5 uL  
 Sample :  
 1. Norephedrine  
 2. Nortriptyline  
 3. Toluene  
 4. Imipramine  
 5. Amitriptyline

\* Symmetry® is a registered trademark of Waters Corporation.



Harmony™ C18 250 X 4.6mm 5u

Mobile Phase	:	80/20 Methanol/Buffer (20mM potassium phosphate pH=7)
Flow Rate	:	1.0mL/min
Detection	:	UV @ 225nm
Column Temp	:	23°C
Injection Volume	:	5 uL
Sample	:	1. Uracil 2. Toluene 3. Ethylbenzene 4. Quinizarin 5. Amitriptyline



Symmetry™ C18 250 X 4.6mm 5u

Mobile Phase	:	80/20 Methanol/Buffer (20mM potassium phosphate pH=7)
Flow Rate	:	1.0mL/min
Detection	:	UV @ 225nm
Column Temp	:	23°C
Injection Volume	:	5 uL
Sample	:	1. Uracil 2. Toluene 3. Ethylbenzene 4. Quinizarin 5. Amitriptyline

Harmony™ C18 3.5u 100A

	<u>4.6mm (ID)</u>	<u>4.0mm (ID)</u>	<u>3.2mm (ID)</u>	<u>2.1mm (ID)</u>
5cm	115121-HRM-C18	114121-HRM-C18	11d121-HRM-C18	112121-HRM-C18
7.5cm	195121-HRM-C18	194121-HRM-C18	19d121-HRM-C18	192121-HRM-C18
10cm	125121-HRM-C18	124121-HRM-C18	12d121-HRM-C18	122121-HRM-C18
15cm	135121-HRM-C18	134121-HRM-C18	13d121-HRM-C18	132121-HRM-C18

Harmony™ C18 3.5u 300A

	<u>4.6mm (ID)</u>	<u>4.0mm (ID)</u>	<u>3.2mm (ID)</u>	<u>2.1mm (ID)</u>
5cm	115131-HRM-C18	114131-HRM-C18	11d131-HRM-C18	112131-HRM-C18
7.5cm	195131-HRM-C18	194131-HRM-C18	19d131-HRM-C18	192131-HRM-C18
10cm	125131-HRM-C18	124131-HRM-C18	12d131-HRM-C18	122131-HRM-C18
15cm	135131-HRM-C18	134131-HRM-C18	13d131-HRM-C18	132131-HRM-C18

Harmony™ C18 5u 100A

	<u>4.6mm (ID)</u>	<u>4.0mm (ID)</u>	<u>3.2mm (ID)</u>	<u>2.1mm (ID)</u>
5cm	115221-HRM-C18	114221-HRM-C18	11d221-HRM-C18	112221-HRM-C18
10cm	125221-HRM-C18	124221-HRM-C18	12d221-HRM-C18	122221-HRM-C18
15cm	135221-HRM-C18	134221-HRM-C18	13d221-HRM-C18	132221-HRM-C18
25cm	155221-HRM-C18	154221-HRM-C18	15d221-HRM-C18	152221-HRM-C18

Harmony™ C18 5u 300A

	<u>4.6mm (ID)</u>	<u>4.0mm (ID)</u>	<u>3.2mm (ID)</u>	<u>2.1mm (ID)</u>
5cm	115231-HRM-C18	114231-HRM-C18	11d231-HRM-C18	112231-HRM-C18
10cm	125231-HRM-C18	124231-HRM-C18	12d231-HRM-C18	122231-HRM-C18
15cm	135231-HRM-C18	134231-HRM-C18	13d231-HRM-C18	132231-HRM-C18
25cm	155231-HRM-C18	154231-HRM-C18	15d231-HRM-C18	152231-HRM-C18

ES INDUSTRIES  
701 South Route 73  
West Berlin NJ 08091

Toll-Free: 1-800-356-6140  
Telephone: 856-753-8400  
Fax: 856-753-8484

email: [esindustries@msn.com](mailto:esindustries@msn.com)  
website: [www.esind.com](http://www.esind.com)