



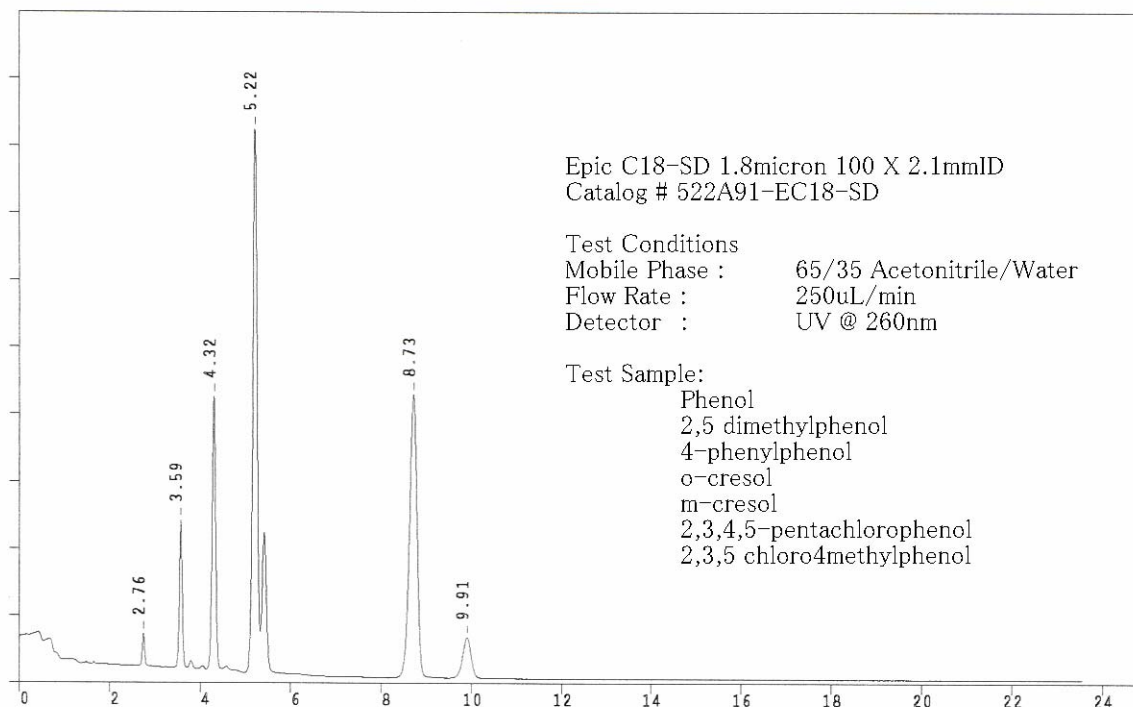
Epic C18 SD Sub-2 Micron HPLC Columns

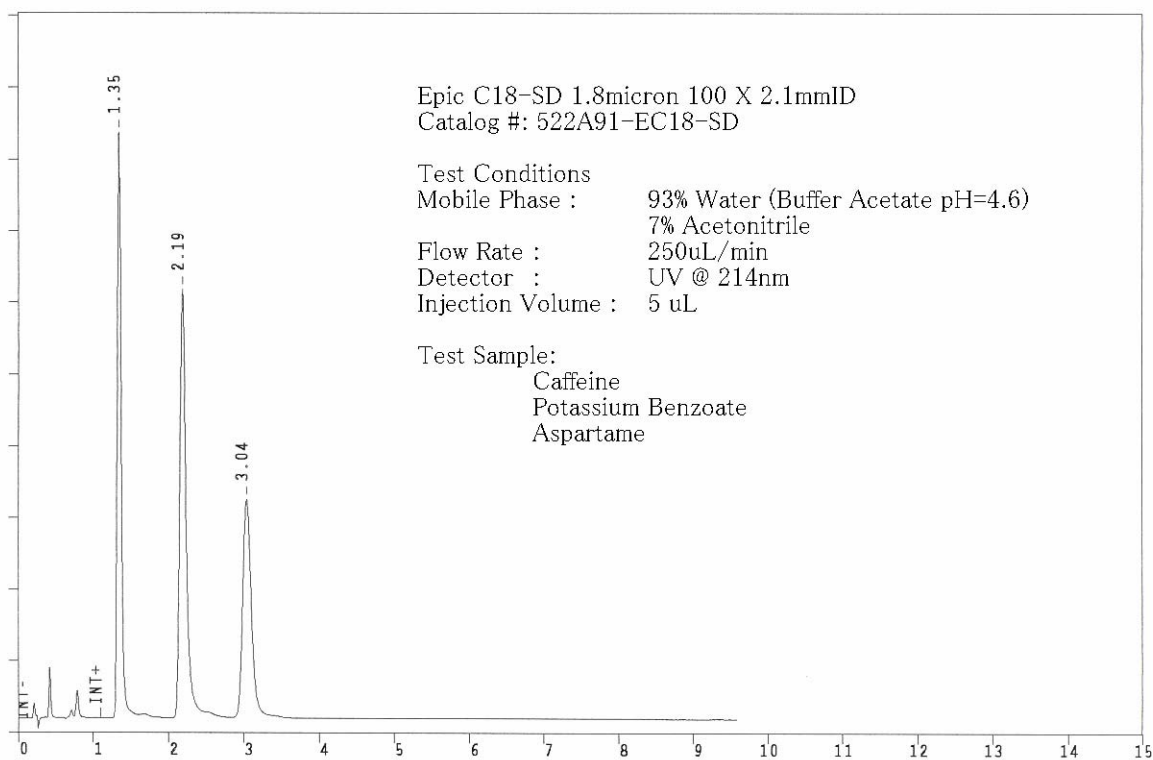
Application News

701 South Route 73 • West Berlin, New Jersey 08091-2621 • (856) 753-8400 • Fax (856) 753-8484

Epic C18-SD 1.8 μ m

Epic C18-SD sub-2 micron is specifically engineered for the demands of high performance HPLC. Epic C18-SD is product of high bonding density technology; high bonding density provides the maximum stationary phase interaction providing a platform for flexible mobile phase compositions. It provides superior retention even at low and especially at high organic levels. In addition, it is compatible with all LC-MS mobile phases and buffer systems. The high carbon loading for Epic C18-SD provides for high sample loadings enabling the analysis of trace components in the presences of major components. Several chromatograms highlighting the capabilities of Epic C18-SD are shown below.





Epic C18-SD 1.8 μ m 120Å

	4.6mm (ID)	3.0mm (ID)	2.1mm (ID)	1.0mm (ID)
5cm	515A91-EC18-SD	513A91-EC18-SD	512A91-EC18-SD	511A91-EC18-SD
7.5cm	595A91-EC18-SD	593A91-EC18-SD	592A91-EC18-SD	591A91-EC18-SD
10cm	525A91-EC18-SD	523A91-EC18-SD	522A91-EC18-SD	521A91-EC18-SD
15cm	535A91-EC18-SD	533A91-EC18-SD	532A91-EC18-SD	531A91-EC18-SD

ES INDUSTRIES
 701 South Route 73
 West Berlin NJ 08091

Toll-Free: 1-800-356-6140
 Telephone: 856-753-8400
 Fax: 856-753-8484

email: esindustries@msn.com website: www.esind.com