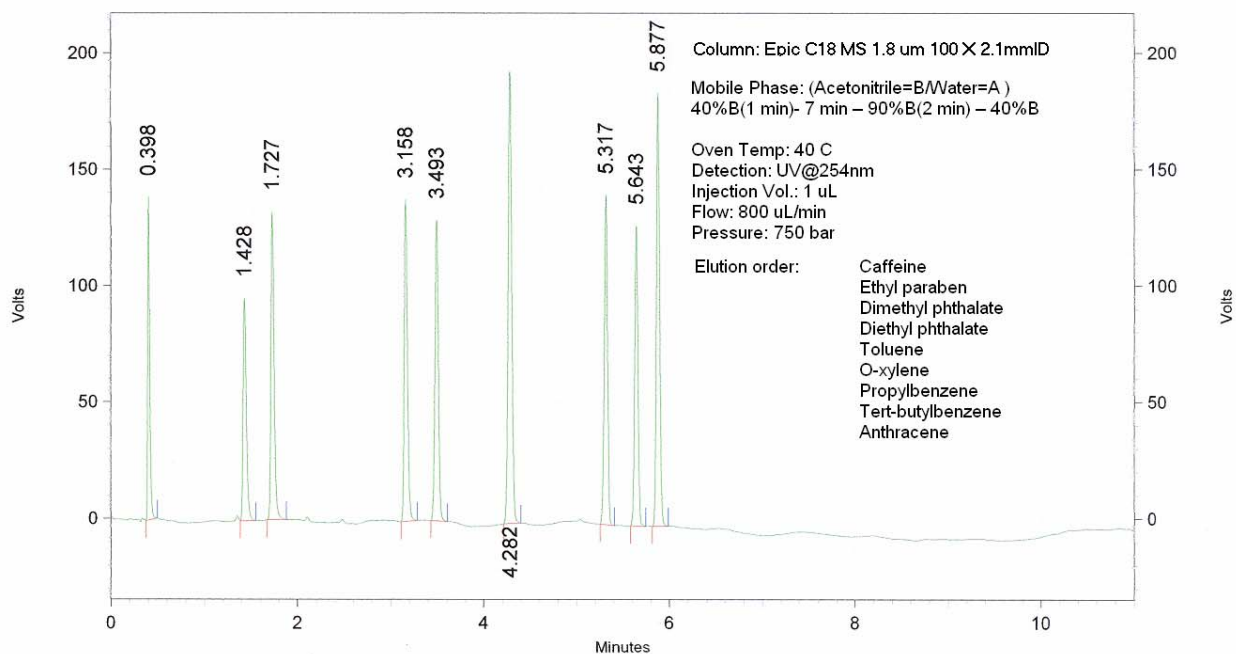


Epic C18 MS 1.8 μ m

Epic C18 MS 1.8 μ m is specifically engineered for the demands of LC-MS. It provides superior retention even at high organic levels. Many LC-MS applications rely on high level of organic modifier in the mobile phase, particularly in the for high performance trace analysis requiring high sensitivity and low level detection; Epic C18-MS 1.8 μ m is ideally suited for these mobile phase conditions. Epic C18-MS 1.8 μ m is product of high bonding density technology; high bonding density provides the maximum stationary phase interaction providing a platform for flexible mobile phase compositions. In addition, it is compatible with all LC-MS mobile phases and buffer system. A chromatogram of polar and non-polar components (shown below) displays the unique capabilities of this stationary phase for a difficult separation. This column provides advanced high performance/high resolution LC-MS separations in a narrow bore short column formats.



Epic C18 MS 1.8 μ m 120 \AA

	4.6mm (ID)	3.0mm (ID)	2.0mm (ID)	1.0mm (ID)
5cm	515A91-EC18-MS	513A91-EC18-MS	512A91-EC18-MS	511A91-EC18-MS
7.5cm	595A91-EC18-MS	593A91-EC18-MS	592A91-EC18-MS	591A91-EC18-MS
10cm	525A91-EC18-MS	523A91-EC18-MS	522A91-EC18-MS	521A91-EC18-MS
15cm	535A91-EC18-MS	533A91-EC18-MS	532A91-EC18-MS	531A91-EC18-MS