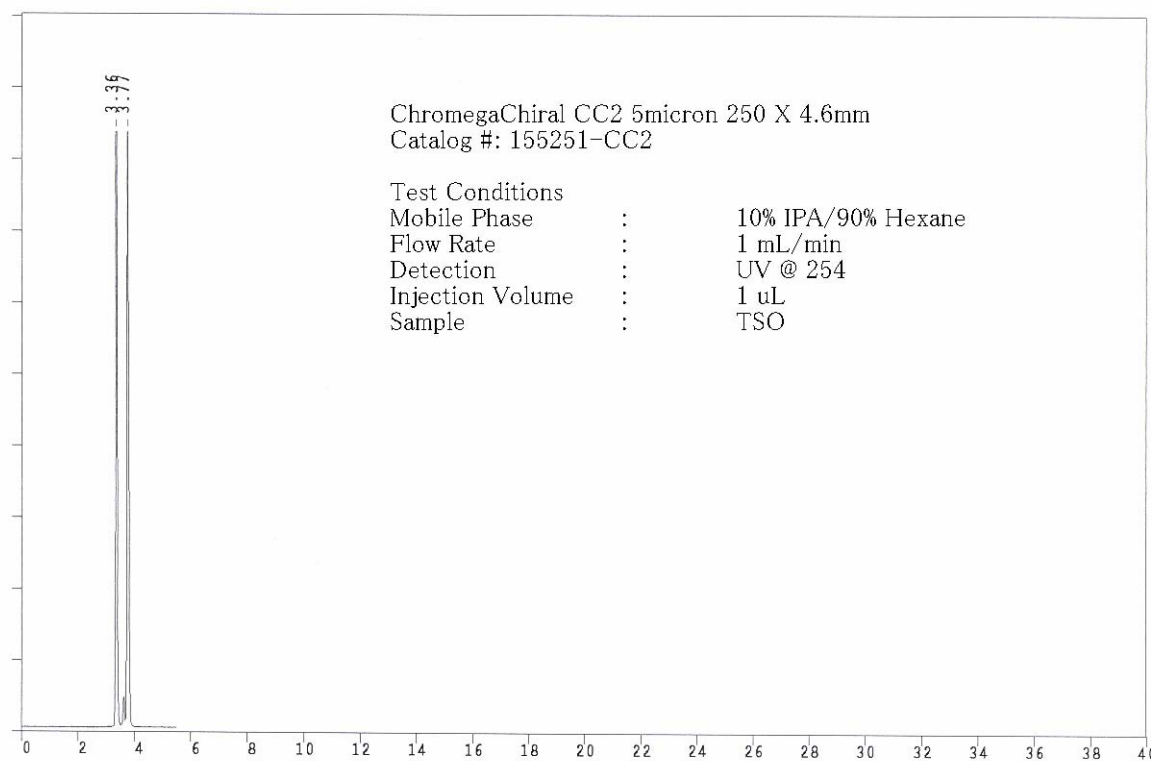
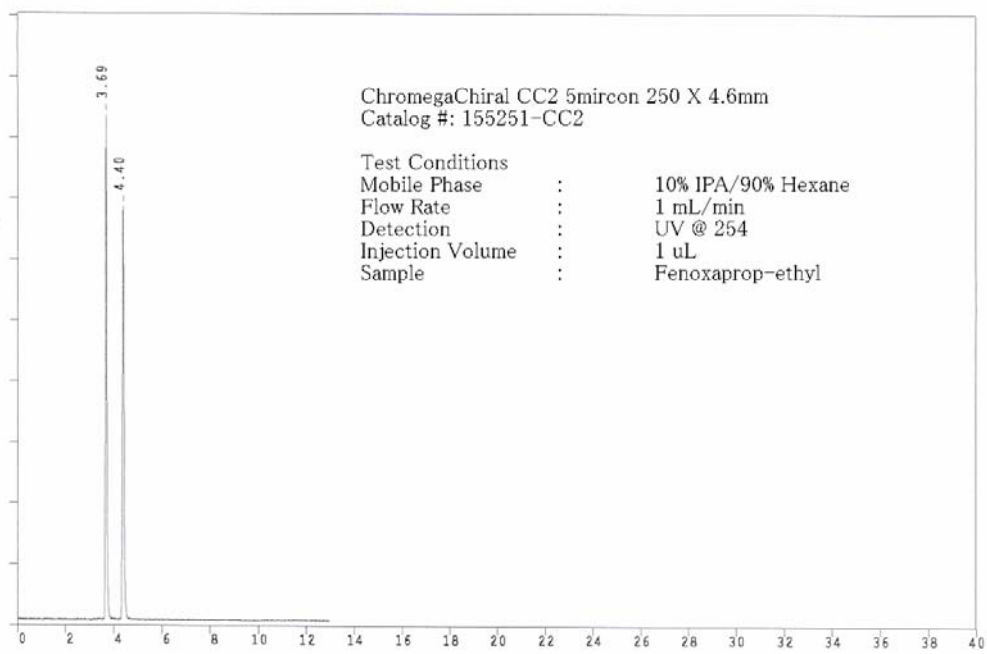


 <b>INDUSTRIES</b>	<b>ChromegaChiral CC2 HPLC Columns</b>
	<b>Application News</b> 701 South Route 73 • West Berlin, New Jersey 08091-2621 • (856) 753-8400 • Fax (856) 753-8484

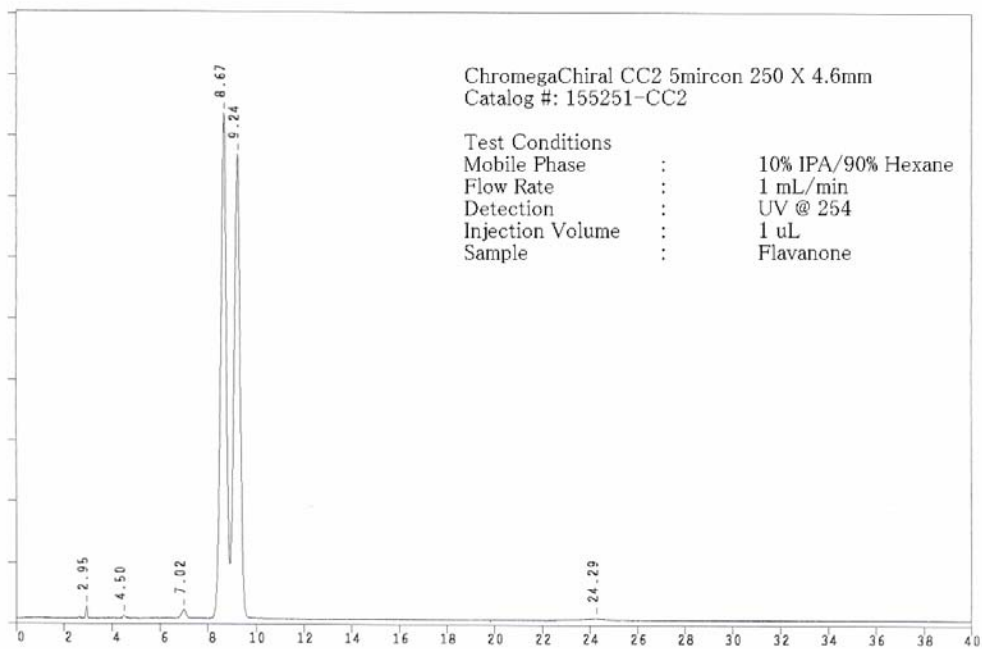
**ChromegaChiral CC2** is our newest product for high resolution chiral separations. It is a modified cellulose coated on the high purity, high performance spherical silica particles. The chemical modification includes the chemical bonding of 3-chloro-4 methylphenylcarbamate to cellulose. The use of cellulose modified with chlorinated phenyl groups moiety provides for the separation for many previously unresolved/poorly resolved chiral mixtures. This chemical modification provides for similar separation behavior to Phenomenex Lux Cellulose-2. Several chromatograms showing the chiral resolving power of the ChromegaChiral CC2 are shown below.



HPLC Column Test Report



HPLC Column Test Report



HPLC Column Test Report

	ChromegaChiral CC2 5u 1000Å	
	4.6mm (ID)	2.1mm (ID)
10cm	125251-CC2	122251-CC2
15cm	135251-CC2	132251-CC2
25cm	155251-CC2	152251-CC2

ES INDUSTRIES  
701 South Route 73  
West Berlin NJ 08091

Toll-Free: 1-800-356-6140  
Telephone: 856-753-8400  
Fax: 856-753-8484

email: [esindustries@msn.com](mailto:esindustries@msn.com) website: [www.esind.com](http://www.esind.com)